



Cambodia & Vietnam

HALONG BAY, RED RIVER & LAOS MEKONG

VIENTIANE TO VIET TRI - 21 NIGHTS

UPSTREAM

For the first-time travelers will be able to explore the key sites of Northern Vietnam by river ship traversing the Red River delta and its main tributaries, connecting the wonders of Halong Bay with the excitements of down town Hanoi, and then on into the interior, well off the beaten track. This is a combination of scenic beauty, lively and interesting (sometimes industrial) life of the river and exploring rivers where no other tourist craft operate.

Combined this with a three-country expedition as we will traverse Laos to touch Thailand and Burma at the once notorious Golden Triangle. From Vientiane, the old French capital, and so redolent of L'Indochine, beyond Luang Prabang, Pandaw is the first river expedition since prewar days to cross all Laos.

This trip included flight between Hanoi and Vientiane or v.v. with a one-night hotel stay.



[VIEW ONLINE](#)

CONTENTS



Route Map	p.03
Itinerary Upstream	p.04
Pandaw Stateroom	p.10
Ships - RV Angkor Pandaw	p.11
Ships - RV Champa Pandaw	p.12
Pre & Post Tours	p.13
Other information	p.21

ROUTE MAP



UPSTREAM

ITINERARY UPSTREAM



DAY 1 VIENTIANE

PLEASE NOTE: Due to low water levels around Vientiane, we will be operating a low water itinerary from December 2022 through March 2023. Our ship will not be able to sail into Vientiane and alternate transportation by river, plus overnight stays in hotel during time in Vientiane will be provided.

Embarkation 12.30, followed by lunch and afternoon exploration of the delightful French city including visits to the golden Pha That Luang Stupa, Sisaket Temple, the President's Hall, Wat Prakeo Temple and the Phatouxay monument. Set sail late afternoon, enjoy a welcome dinner on board and overnight near Vientiane.

[More about Vientiane](#)



DAY 2 CRUISING THE MEKONG

Cruise upstream on the Mekong, passing lush jungle scenery and tiny riverside villages. Morning presentation on the Lao language. Afternoon cooking demonstration on the upper deck. Arrive in Ban Xanakham to moor overnight.



DAY 3 PAK LAI

Afternoon visit to the French administrative town of Pak Lai with many colonial buildings and a bustling local market. This town boasts the largest elephant festival in South East Asia, usually in February.

[More about Pak Lai](#)



DAY 4 BAN PARK BOR VILLAGE

Morning visit and walking tour to Khamo tribal village, a typical village, set on the banks of the Mekong amidst lush jungle. In the afternoon pass through the Xanyaburi Hydro Electric Power Plant.

[More about Xayaburi Dam](#)

DAY 5 BAN MOUANG KHAI VILLAGE AND LUANG PRABANG

In the morning visit a Hmong village and continue upstream to the village of Ban Mouang Khai. Afternoon sightseeing by minibus visiting the jungle pools and dramatic Khaung Si waterfall then on to a butterfly garden. Arrive in the heart of the temple city of Luang Prabang where there is a buzzing night market and many great cafes and some good local restaurants.

[More about Kuang Si Waterfalls](#)



CONT'D 

ITINERARY UPSTREAM



DAY 6 LUANG PRABANG

In the morning explore by tuktuk this well-preserved and unique world heritage site with its many Buddhist temples, libraries and royal palace. Visit the National Museum and have the afternoon free to explore the beauty and unique atmosphere of Luang Prabang on your own. Enjoy traditional Laos dancing on the upper deck late afternoon. Moor overnight in Luang Prabang.

[More about Luang Prabang](#)



DAY 7 PAK OU CAVES

Early morning walking tour to see the alms offering by the local people to hundreds of monks who walk around the city every morning. Passengers are invited to join in with offerings we provide for the alms giving. Morning sightseeing by local boat exploring the unique Pak Ou Caves, a Buddhist sanctuary with spectacular limestone cliff faces. Evening cocktails on a sandbank. Sail upstream on the beautiful Mekong towards Ban Bo.

[More about Pak Ou Caves and Nam Ou River](#)



DAY 8 PAK BENG

Morning visit to a local Khamo village. Sail upstream on the Mekong passing Pak Beng towards Pak Sit.

[More about Pak Beng](#)



DAY 9 BAN HOUAYXAY

Early morning walking tour in a Khamo village then cruise through stunning scenery to the border of Laos and Thailand. The night is spent on the Lao side in the Huay xay area where we take a late afternoon village walk.

DAY 10 CHIANG KHONG

Cross over into Thailand via the Thai-Laos Friendship Bridge before rejoining your ship in Chiang Khong. Farewell cocktails and Thai traditional dance on board for your last evening.

[More about Golden Triangle](#)



DAY 11 CHIANG KHONG

Disembark by 8.30 in Chiang Khong and group transfer to hotel/airport. En route, explore the Golden Triangle including a visit to the opium museum. Continue to airports or city hotels in Chiang Rai (2 hours) and Chiang Mai (6 hours).

DAY 12 HALONG BAY

Transfer from Hanoi International Airport or meeting point to Halong Bay to embark your Pandaw ship followed by lunch on board. Cast off in the afternoon with a welcome cocktail for an evening sail, dropping anchor in a sheltered bay amidst the beautiful island scenery.

[More about Halong Bay](#)

CONT'D 

ITINERARY UPSTREAM



DAY 13 HALONG BAY

Morning sail around Halong Bay and beyond with its 1,500 dramatic limestone islands and extraordinary rock formations, dating back 20 million years. We make a stop at Viet Hai Village and continue our journey by mountain bike or electric buggy to visit the village's vegetable farm and typical village houses. It is a breathtaking trip along a small road winding its way through the limestone rocks. In the afternoon we will continue cruising towards Lan Ha Bay for a visit to a floating fishing house. Weather dependent, we will end the day with cocktails at a beautiful beach in Halong Bay.

[More about Halong Bay](#)



DAY 14 HALONG BAY

Our exploration of Halong Bay continues and we stop at the so called "Dark and Bright Cave". Take a kayak or a local basket boat rowed by fishermen and enter this remarkable cave into an enclosed area similar to a crater. Bats can be heard in the cave and massive stalagmites hang from the ceiling. In the afternoon, we leave Halong Bay and are enter the river where we drop anchor near Hai Phong.

[More about Halong Bay](#)



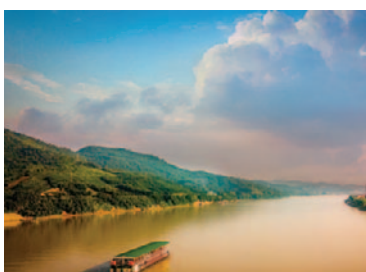
DAY 15 THE KINH THAY RIVER

Observe the lively and interesting life of the Kinh Thay river, a key commercial waterway. Afternoon excursion to Thanh Ha Commune with village walk and a private water puppet show set under shade by a beautiful pond of lotus and lilies. We continue cruising until late evening and drop anchor midstream.



DAY 16 DAY RIVER

This morning we will sail on the Lower Red River and Day River. Afternoon visit the Dien Xa Bonsai Village where we will walk to the bonsai village and meet with local artists and share their bonsai experience. Cruise on Day River towards Ninh Binh City.



DAY 17 NINH BINH

In the morning we will visit Tam Coc, taking a rowing boat ride to visit the so call "Halong on land" in Ninh Binh. In the afternoon we visit the quaint village of Pham Phao where guests can walk around the village visiting a host family where musician instruments have been made and repaired for generations. Listen to the owner who plays every instrument within his family run business. We visit local Woodworking Artisans who produce items for local and international markets.

CONT'D 

ITINERARY UPSTREAM



DAY 18 THE LOWER RED RIVER

In the morning we sail upstream on the Red River to Phat Diem Cathedral visit the famous stone cathedral of Pat Diem. We then continue on the Red River to Hanoi.



DAY 19 HANOI

Dropped anchor in the bustling city of Hanoi, passengers will visit some highlights of this Asian metropolis, must see's like the notorious Vietnam war prison known as the Hanoi Hilton, temple of literature where Confucius did his thinking and the Ho Chi Minh Mausoleum. Afternoon walking tour of Hanoi including a visit to a coffee shop where we learn about Vietnam's famous coffee making industry. Before returning to your ship you will enjoy a traditional unicorn and lion dance at the jetty.

[More about Hanoi](#)



DAY 20 HANOI

Morning going off shore to visit Bat Trang ceramic village then sail through day from Hanoi up the Red River to Viet Tri, not the most picturesque of towns but an excellent base for going deeper into Highland Vietnam. Going a shore we visit a timeless Arcadian Vietnam with emerald green rice paddies punctuated by lime stone rock formations. Of particular interest is the Thay and Tay Phuong Pagodas, hardly known, yet with exquisite temples dating from the 8th and 11th century and home to some fine Buddhist statuary carved from jackfruit trees. We will arrive in Vinh Phuc in the evening.



DAY 21 THE UPPER RED RIVER

In the morning we go ashore to visit the UNESCO praised village of Duang Lam. In the afternoon, visit the carpenter and smith village of Ly Nhan. We sail upstream on the Upper Red River to Viet Tri. Enjoy traditional dances on board.



DAY 22 VIET TRI

Disembark after breakfast and visit the conical hat making village of Gia Thanh. By bus we continue to Hung Lo Temple, Lunch will be served at a local restaurant, followed by a transfer to Hanoi airport or drop off point Pan Pacific Hotel Hanoi.

WHATS INCLUDED, TRANSFERS & VISAS UPSTREAM

Cruise Price Includes: One overnight hotel in Hanoi, one flight between ships, entrance fees, guide services (English language), gratuities to crew, main meals, local mineral water, jugged coffee, teas & tisanes. Transfers between ports of embarkation and Hanoi International Airport at the start and end of the voyage.

Cruise Price Excludes: International flights, port dues (if levied), laundry, all visa costs, fuel surcharges (see terms and conditions), all beverages except local mineral water, jugged coffee, teas & tisanes and tips to tour guides, local guides, bus drivers, boat operators and cyclo drivers.

Transfers & Joining

DAY 1 VIENTIANE

Transfers included from airport or hotel in Vientiane. We suggest an early morning arrival. Any late arrivals will also be transferred to the ship but you might miss lunch and/or the afternoon excursion. If staying at a city hotel in Vientiane you will be picked up between 11.00 and 12.00. Our representative will call you on the evening before or leave a message with the hotel to reconfirm the exact pick up time.

Please note: There is a surcharge for private transfers, and pick up and drop for Udon Thani if you are not able to meet us at above scheduled pick up times.

Vientiane Jetty - Land River Transport Enterprise, Thadeua Road km4, Sisattanak District.

DAY 11 CHIANG KHONG

Disembark by 8.30 in Chiang Khong and group transfer to hotel/airport. En route, we will visit the Halls of Opium and the Golden Triangle before we transfer you to Chiang Rai or Chiang Mai hotel or airport.

You will reach Chiang Rai at 15.30 and Chiang Mai at 17.30

Private transfers will need to be arranged at an extra cost. We suggest to book a hotel in Chiang Mai or Chiang Rai after your cruise.

DAY 12 HALONG BAY

TRANSFER FROM HANOI AIRPORT

We pick you up at Hanoi Noi Bai International Airport. Last departure is no later than 10:30 (Unless there are any delays with your flight). A Pandaw representative will be waiting for you with a Pandaw Sign at column No12. On the right hand side of the international arrival exit. Arrival in Halong Bay at 14.00.

Please note: Guides and drivers are not allowed inside the terminal building. We will be waiting for you outside with a Pandaw sign. Hanoi Airport has two exits; if you don't see us, please try the other exit on the same level (30 meters).

CONT'D 

WHATS INCLUDED, TRANSFERS & VISAS UPSTREAM

TRANSFER FROM HANOI CITY

For passenger already in Hanoi the night before, we will pick you up from your hotel in central Hanoi and transfer you directly to the ship. Please ensure your pre-cruise hotel information is provided to Pandaw in advance. Pick up times will be notified to your hotel reception the night before and will typically be between 09:30am and 10:00am. Lunch will be served upon arrival to the ship. Surcharges may apply for hotel transfers outside of Hoan Kiem District or Hanoi Old Quarter.

PRIVATE ARRIVAL AT HALONG BAY

For passengers already in Ha Long Bay on the night before, please come to Tuan Chau International Jetty. Embarkation time will be between 12:00 to 14:00.

DAY 22 VIET TRI

DEPARTURE TRANSFER

After lunch at local restaurant departure for Hanoi Noi Bai International Airport. Estimated arrival at Hanoi Airport at 14:45 and continuing to Pan Pacific Hotel Hanoi, arriving 15:30. Your flight out of Hanoi airport must be after 16.00pm (domestic) or 17.00pm (international).

Visa Information

DOWNSTREAM

Visa on arrival for Laos can be acquired easily at the border crossing and requires 1 passport photo plus USD40 - USD55 in cash for processing. Alternatively, an E-visa can be obtained prior to travel for a fee of \$50 USD. Please use the official Laos E-visa website only - <https://laoevisa.gov.la>.

UPSTREAM

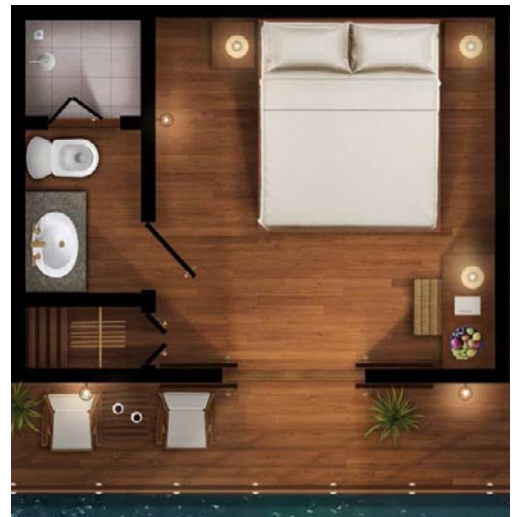
Most nationalities are eligible for visa waiver in Thailand meaning no visa is required for stays of 15 days. Please check your local embassy for up to date information about your personal requirements.

[Click here](#) for further visa information.

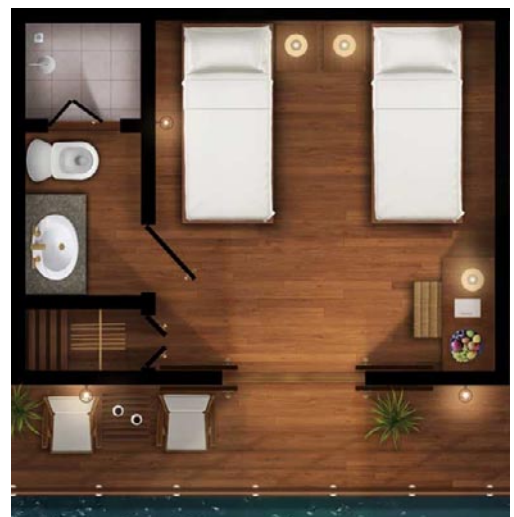
PANDAW STATEROOMS

The Pandaw stateroom is the most celebrated feature of our ships, combining splendid colonial-era character with exquisite contemporary comfort.

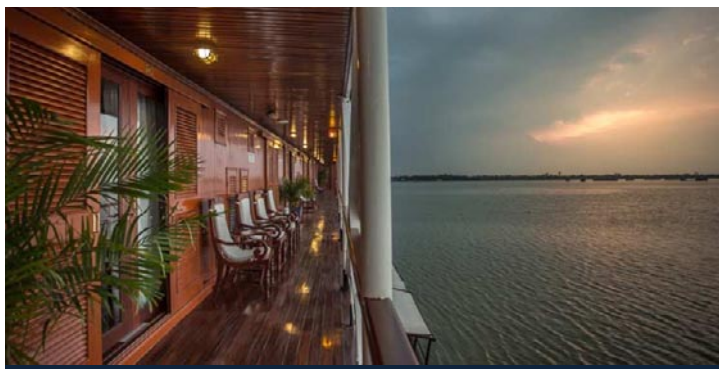
Finished in brass and teak, the main and upper deck rooms are a spacious 168 square feet (15.6 sqm), with the exception of the Zawgyi Pandaw which is 150 square feet (14 sqm). As the space is much loved by all our passengers, we have ensured that with each ship we build, the stateroom remains essentially the same. Be advised: our cabins do not have mini-bars, satellite TV's, internet access or telephones. Passengers tend to choose Pandaw in order to escape from the tiresome features found in international business hotels.



DOUBLE CONFIGURATION

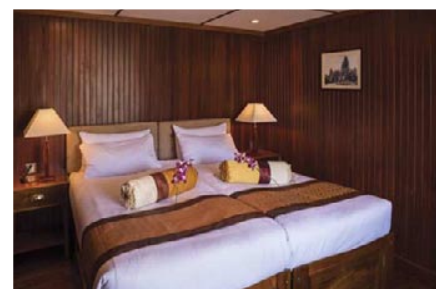


TWIN CONFIGURATION



- Fruit and flowers on arrival
- Kimonos and slippers
- Spa-branded amenities
- Unlimited mineral water

Bedroom	12' x 10'
Bathroom	6' x 4'
Showeroom	2' 8" x 3' 4"
Single Bed	6' 7" x 3' 3"



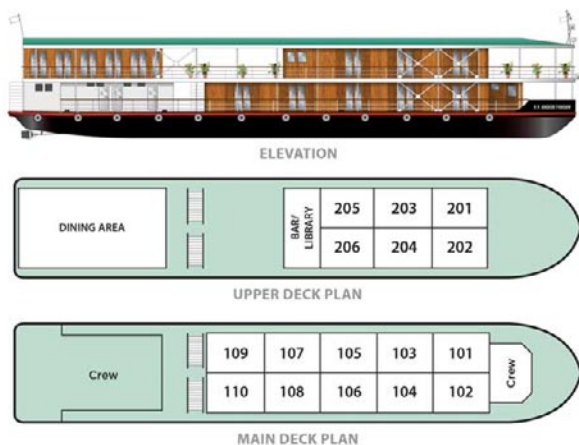
PANDAW SHIPS

RV Angkor Pandaw

Sister to the Katha and from the same yard delivered in 2013, the only difference with the Katha is an enclosed air conditioned dining room insisted on by an American charterer. Originally on the Mekong in 2015 we transferred her to the Red River in North Vietnam. In fact the enclosed dining room has proved useful as it can be cold up there in winter.

The ship has quality mountain bikes for your independent exploration.

Images of RV Angkor Pandaw



- **Build:** 2012 in Saigon
- **Length:** 138.61ft / 42.25m
- **Beam:** 8.50ft / 8.70m
- **Draft:** 3ft / 90cm
- **Berths:** 32 pax

ACCOMMODATION

- 10 main deck staterooms and 6 upper deck staterooms
- Air-conditioned panorama dining room
- Spacious, open-air lounge
- Observation deck
- Lounge bar
- 24hrs hospitality bar
- Fair-trade Shop
- Guest relation desk
- Library with contemporary and classic literature
- Hair Dryers in all cabins

WINING & DINING

- Local master chef heading an experienced international culinary team
- Semi-buffet breakfast, Semi-buffet lunch, and seated theme dinners
- Daily lean & light menu options
- Complimentary local mineral water, jugged coffee, teas & tisanes
- Extensive wine list with premium wines
- Series of cultural performances, educational talks, cooking classes, and ship tour
- Welcome drink on arrival
- Welcome cocktail
- Farewell reception
- Theme dinners
- Lounge bar
- 24hrs hospitality bar
- Onboard bakery with daily freshly baked breads and rolls

ON EXCURSIONS

- Admissions
- Shoe cleaning after excursions
- Bottled drinking water
- We give away aluminium water bottles
- Cold towel service after excursions
- Refreshing drink following excursions
- Full-size motor coach on all excursions
- 1st aid trained assistant guide to follow all tours and excursions

SAFETY & SECURITY

- All onboard crew is trained and certified as per international marine standards
- Fire alarm system in all cabins, public areas and back areas
- Firefighting system in all ship areas
- Expert marine superintendent
- 24 hrs watch on duty
- Certified hygiene standards for all areas (Johnson & Diversey)

ONBOARD STAFF

- Captain
- River Pilot
- First Officer
- Chief Engineer
- 1st Engineer
- Electrician
- Bosun & nautical crew
- Ship manager
- Housekeeping
- Dining
- Bar keeper
- Chefs
- Spa therapist
- Local tour guides

PUBLIC SPACES

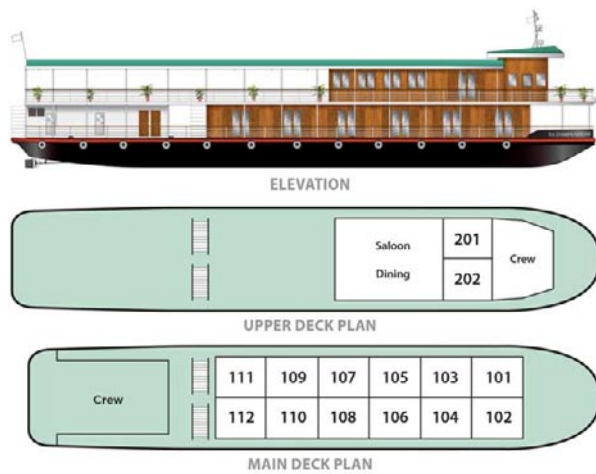
- Guest relation desk
- Shop, supporting fair trade
- Library with contemporary and classic literature
- Wireless internet in all public areas

PANDAW SHIPS

RV Champa Pandaw

The Champa Pandaw, sister ship of the Laos Pandaw, began cruises on the Upper Mekong from September 2016. The ship has quality mountain bikes for your independent exploration.

[Images of RV Champa Pandaw](#)



- **Built:** 2016 in Thailand
- **Length:** 44.50 m
- **Beam:** 8.90 m
- **Draft:** 1.20 m
- **Berths:** 28 pax

ACCOMMODATION

- 12 main deck staterooms
- Staterooms are 14 square meters (150 sqf), finished in teak and brass
- Panoramic sliding door
- Kimonos and slippers
- Spa-branded amenities
- Unlimited mineral water
- Electric mini safe
- Imported quality linens with duvet and two kind of pillows
- Premium mattresses
- Convertible bed configuration
- Welcome flower arrangement and welcome gift
- Mirror
- Multi-configuration plugs
- Generous closet space and under-bed storage
- Hair dryer
- Nightly turndown service
- 24hr laundry service
- Complimentary evening canapés

WINING & DINING

- Local master chef heading an experienced international culinary team
- Personalized meal services
- Daily lean & light menu options
- Complimentary local mineral water, jugged coffee, teas & tisanes
- Extensive wine list with premium wines
- Series of cultural performances, educational talks, cooking classes, and ship tour
- Welcome drink on arrival
- Welcome cocktail
- Farewell reception
- Theme dinners
- Open air lounge and bar
- Bistro style al fresco dining
- 24hrs hospitality bar
- Onboard bakery with daily freshly baked breads and rolls

ON EXCURSIONS

- Admissions
- Shoe cleaning after excursions
- Bottled drinking water
- Cold towel service after excursions
- Refreshing drink following excursions

SAFETY & SECURITY

- All onboard crew is trained and certified as per international marine standards
- Fire alarm system in all cabins, public areas and back areas
- Firefighting system in all ship areas
- Expert marine superintendent
- 24 hrs watch on duty

PRE & POST EXTENSIONS

Pre & Post Bookable via Pandaw.com as add on

Pre Tour

THE PLAIN OF JARS

UPSTREAM

The Plain of Jars offers fascinating insights into Phuan, Hmong, Khmu and Tai Dam culture. Very little is known about the civilization that created The Plain of Jars, but you can only imagine the greatness of the ruler who constructed these unusual and enormous storage jars.



This is a Pandaw group tour depending on how many guests booked this extension.

DAY 1 VIENTIANE

Welcome to Laos! We will meet you at the airport and transfer to your hotel in Vientiane. Rest of day at leisure.

Meals: None.

DAY 2 VIENTIANE - PHONSAVANH

8:30: Pick up at hotel and drive to Vat Sisaket, the oldest original temple in Vientiane. Built in 1818, Vat Sisaket is the sole survivor of an invasion in 1828. The temple features remarkable frescoes and 6,840 Buddha images. Nearby is Ho Phra Keo, once the royal temple of Lao monarchy. Built in 1565, Ho Phra Keo has been used as a museum since 1970 and contains some of the finest Buddhist sculptures and artifacts in the country. The main structure originally housed the famous Emerald Buddha that now resides in Bangkok's Wat Phra Keo. One of the most photographed images of Vientiane is Patousay, the victory gate also known as Anousavari. Constructed in 1958, its architecture is inspired by the Arc of Triumph in Paris. Another famous Vientiane landmark is the That Luang Stupa. King Setthathirath built this great sacred stupa in 1566. Its central structure is 45 meters tall and echoes the curving lines of an elongated lotus. The original stupa was said to contain relics of Lord Buddha. Continue to visit the Morning Market (Talaat Sao), known for its superior silk weaving, metal work, and woodcarving. Transfer to the airport for your afternoon flight to Xieng Khuang, the gateway to the plain of jars. Transfer to your hotel.

Meals: Breakfast at hotel.

DAY 3 THE PLAIN OF JARS

A full day to explore the famous Plain Of Jars, a vast area extending around Phonsavanh where over 300 huge stone jars carved out of solid rock from 1 to 3.25 meters high and weighing up to six tons each. And estimated to be 2,500 to 3,000 years old. According to local legend, King Khun Chuang had them constructed in order to store wine for the celebration of his conquest of the province in the 6th century. We visit Site I, II and III. Continue to Ban Na Pia (War Spoon Village) before returning to Phonsavanh.

Meals: Breakfast at hotel, Lunch at local restaurant.

DAY 4 DEPARTURE TO VIENTIANE

Morning visit to scenic Muang Khoun, surrounded by mountains, the ancient capital that was founded by Chao Noi Muang and was a stronghold for the Xieng Khouang royal family was destroyed during the Indochina War. The town was rebuilt after 1975 with rows of wooden Lao houses and a market area. We also visit the ruins at Wat Phia Wat, That Foun and That Chomphet. Transfer to Phonsavanh airport for flight to Vientiane followed by transfer to your Pandaw vessel.

Meals: Breakfast at hotel.

CONT'D 

PRE & POST EXTENSIONS

Pre & Post Bookable via Pandaw.com as add on

Vansana Plain of Jars Hotel

Conveniently located just 30 minutes from the Plain of Jars and 15 minutes from the Airport, the Vansana Plain of Jar Hotel is a simple hotel and the best option in Phonsavan City – Capital of Xiengkhouang Province. The hotel with 44 guestrooms (38 standards rooms and 6 executive suites) is located on a hilltop near the center of the city with 360 degree beautiful views on Phonsavan and the chain of mountains surrounding the Plain of Jars.



Facilities

Rooms come with fan (no AC), bathroom, tea and Coffee making facilities, minibar and safe deposit box, snack bar and restaurant, cable TV, meeting room for 40 persons, shuttle service from the hotel to the airport and the center of the city and laundry service.

Phonsavanh, Xieng Khouang, Laos

Tel: +856 61 213170

The Laos Poet

Whether your visit to Vientiane is for business or a holiday, we'll provide you with a relaxing retreat in the heart of the city. Our rooms and suites are designed to provide an indulgent escape for the weary traveler. Bought to you by Mrs. Lamphoune Voravongsa, creator of iconic Satri House hotel in Luang Prabang, her inspiration in creating Lao Poet was deliver a hotel that offered unique elegance and comfort, whilst mixing modern touches with flourishes of 1930's Indochina. The aim is to be original, unique and distinct and Lao Poet is sure to offer that, along with a warm welcome.



Henbounnoy Street, Ban Haysoke, Chanthabouly District,
Vientiane, 10111

Tel: +856 21 253 537

[Visit Hotel Website](#)

Rates include

English speaking guide, 2-nights at the Vasana Plain of Jars Hotel and 1-night at the Laos Poet Hotel on a bed and breakfast basis, 1x lunch at local restaurant, return domestic flights from Vientiane to Phonsavanh, taxes, all transfers and excursions and described and entrance fees.

Extension Code: LTB3J-VTE-JAR-PRE-O

PRE & POST EXTENSIONS

Pre & Post Bookable via Pandaw.com as add on

Post Tour

HANOI

(SOFITEL LEGEND
METROPOLE)

UPSTREAM

Hanoi is a magical and charming city. You will find that the character, history and romance of the Sofitel Legend Metropole Hanoi may add a little extra special something to your journey here. Savour the French art de vivre blended with elegant Vietnamese touches and enjoy this wonderful place.



DAY 1 HANOI

Transfer from the disembarkation point to Hanoi by Pandaw. Overnight at your hotel in Hanoi.

DAY 2 HANOI

Room available until check out time at 12:00 noon. Transfer to Airport for your flight.

Sofitel Legend Metropole Hanoi

Located in the heart of the old city, the Sofitel Legend Metropole Hanoi is an iconic award-winning luxury Hanoi old quarter hotel. Blending a heritage colonial style with neo-classical luxury and a dash of modernity, you'll find an elegance during your stay you're unlikely to experience anywhere else. Located only 35km away from Hanoi Noibai airport, and mere steps from the Opera House in Hanoi's culturally rich French Quarter, one of Hanoi's prime locations for leisure and business trips.

15 Ngo Quyen Street, Hoan Kiem District, 15 Ngo Quyen, Hoan Kiem 100000, Hanoi
Tel: +84 24 3826 6919

[Visit hotel website](#)



Rates include

All transfers as above by coach or car with local guide, 1 night accommodation.

Extension Code: LTM-PANDAW-07

PRE & POST EXTENSIONS

Pre & Post Bookable via Pandaw.com as add on

Post Tour

HANOI

(SILK PATH BOUTIQUE)

UPSTREAM

Welcome to this charming boutique hotel situated a stone's throw from Hoan Kiem Lake, the historical center of Hanoi. Silk Path Boutique Hanoi is an oasis of distinguished design and serenity in the bustling heart of the city, putting you on the doorstep of the capital's most inspiring sights, top shopping areas and the street food delights that have put Hanoi on every foodie's bucket list.



DAY 1 HANOI

Transfer from the disembarkation point to Hanoi by Pandaw. Overnight at your hotel in Hanoi.

DAY 2 HANOI

Room available until check out time at 12:00 noon. Transfer to Airport for your flight.

Silk Path Boutique Hanoi

Welcome to our charming boutique hotel situated a stone's throw from Hoan Kiem Lake, the historical center of Hanoi. Silk Path Boutique Hanoi is an oasis of distinguished design and serenity in the bustling heart of the city, putting you on the doorstep of the capital's most inspiring sights, top shopping areas and the street food delights that have put Hanoi on every foodie's bucket list.

21 Hang Khay, Hoan Kiem, Hanoi

Tel: +84 24 3938 5555

[Visit hotel website](#)



Rates include

All transfers as above by coach or car with local guide, 1 night accommodation.

Extension Code: LTM-PANDAW-08

PRE & POST EXTENSIONS

Pre & Post Bookable via Pandaw.com as add on

Post Tour

SAPA & HANOI

UPSTREAM

Welcome to our mountain resort, the Silk Path Grand Sapa, perched on a private spot atop one of Sapa's highest hills. Here time stands still, giving you ample opportunities to stroll through the flower gardens and absorb captivating views of the surrounding mountain range. During colonial times Sapa - surrounded by what is referred to as the "Vietnamese Alps" - was a hill station where the French escaped the Hanoi heat, and this heritage is reflected in our elegant, regal interior design and architecture.



DAY 1 TRANSFER TO SAPA

After lunch, transfer from ship to Sapa. Overnight & dinner at Silk Path Grand Sapa.

DAY 2 SAPA

After breakfast, transfer to Fansipan Cable Station for an amazing trip to reach the Indochina Roof, 3143m above the sea level. Starting by cable car and step up to the Peak, enjoy the fresh air and the beautiful landscapes from what so call "the roof of Indochina".

DAY 3 SAPA

Stroll through the flower gardens and absorb captivating views of the surrounding mountain range at Silk Path Grand Sapa. Sapa is located in Lao Cai Province, 380 km Northwest of Hanoi, in close proximity to the Chinese border. Famous for its terraced rice paddies & highlands, Sapa is home to more than 30 colorful hill tribes and close to Vietnam's highest peak, Mount Fansipan. From Sapa, heading northwards on national road 4C to O Quy Ho with several stops for magnificent landscapes of Fansipan, Sin Chai valley and especially amazing flower and vegetable farms. Then turn right to Ban Khoang, a village of the Red Zao ethnic peoples who live their unique way of life and well maintain their traditional values. The village looks prosperous thanks to the combination of wet rice cultivation on the terraced fields with cardamom farming under the shade of trees in thick forest. Take a walk to explore this remote village for a brief understanding of local life. Then leaving Ban Khoang for Ta Giang Phing valley inhabited by the Black Hmong who live in some small villages scattering along a peaceful stream, explore the local life and then back to hotel in Sapa for Lunch at local restaurant.

Locating just at the south eastern side of HAM RONG MOUNTAIN and just close to Sapa town but this valley seems to be unknown by most of the tour operators as well as visitors. Inhabited by the Hmong peoples this narrow valley is quiet and non touristic which is quite different from TA PHIN or MUONG HOA VALLEYS where the local peoples have changed much because of the strong influence of tourism. Trip begins from Sapa at 08.30 in the morning firstly by road transfer for 12km southwards and uphill the DEN THANG MOUNTAIN. Enjoy several stops for marvelous landscapes of Hoang Lien mountain range and Muong Hoa valley before arriving to a small hamlet of village which sits at 1,572m high and overlooking down the Muong Hoa valley. Leaving the vehicle for an easy walk to explore this charming hamlet of the Black Hmong with lots traces of the past sifting lifestyle of the Hmong. Then follow the large village path gradually downhill along the stunning valley of Sa Seng, passing several hamlets of the SA SENG and SAU CHUA VILLAGES along the way which are organized in typical way of the Hmong dwelling, Wooden roofed houses surrounded by rock-all where pot-belly pigs, chickens, water

CONT'D 

PRE & POST EXTENSIONS

Pre & Post Bookable via Pandaw.com as add on

buffaloes running here and there and children entertaining themselves with their own games and toys. There are chances to see Hmong women making fiber from hemp, spinning, weaving to make traditional costumes. Walk end after paying visiting to Sa Pa, another hamlet of the Hmong which located near the former place of Sapa traditional market.

Overnight at Silk Path Grand Sapa. Lunch at local restaurant.

DAY 4 HANOI

After breakfast, leave Sapa for Hanoi. Upon arrival, explore Hanoi with a Street food tour and then visit an art gallery, meet an artist for discussion of the development of fine arts in Vietnam.

Breakfast at hotel, street food for lunch.

DAY 5 Hanoi

Breakfast at your hotel, transfer to the airport.

Silk Path Boutique Hanoi

Welcome to our charming boutique hotel situated a stone's throw from Hoan Kiem Lake, the historical center of Hanoi. Silk Path Boutique Hanoi is an oasis of distinguished design and serenity in the bustling heart of the city, putting you on the doorstep of the capital's most inspiring sights, top shopping areas and the street food delights that have put Hanoi on every foodie's bucket list.

21 Hang Khay, Hoan Kiem, Hanoi

Tel: +84 24 3938 5555

[Visit hotel website](#)



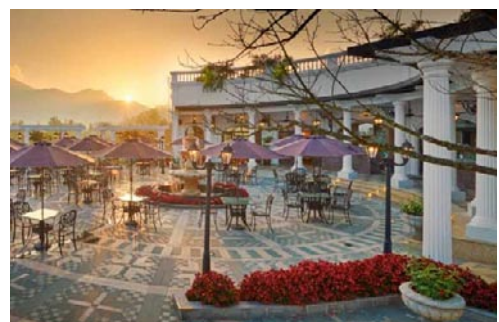
Silk Path Grand Sapa

Welcome to our mountain resort, perched on a private spot atop one of Sapa's highest hills. Here time stands still, giving you ample opportunities to stroll through the flower gardens and absorb captivating views of the surrounding mountain range. During colonial times Sapa – surrounded by what is referred to as the "Vietnamese Alps" - was a hill station where the French escaped the Hanoi heat, and this heritage is reflected in our elegant, regal interior design and architecture.

Doi Quan 6, Group 5, Sapa, Lao Cai, Vietnam

Tel: +84 214 3788 555

[Visit hotel website](#)



Rates include

Transfers and tours as per itinerary, accommodation at the Silk Path Boutique Hanoi and the Silk Path Grand Sapa, with daily breakfast and three lunches and one dinner during the tour.

Extension Code: LTM-PANDAW-11

PRE & POST EXTENSIONS

Pre & Post Bookable via Pandaw.com as add on

Post Tour

HUE & HOI AN

4 NIGHTS

UPSTREAM



Hue and Hoi An are two of Vietnam's scenic and historic highlights and a 'must see;' on most people's visit to this most wonderful country. Our included trip on the Perfume River and visit to the enormous Hue Citadel are fascinating. Hoi An is best explored independently and retains a charming village feel which comes alive after sunset with the glow of red lanterns and the senses of Asia. And, of course, enjoy time to relax at your beach resort.

We are pleased to offer a pre and post extension staying in delightful and specially selected boutique hotels, including a connecting domestic flight, all transfers, excursions in Hue, a scenic journey from Hue to Hoi An and 2-nights in Hoi An. It is possible to extend your stay in Hoi An if required.

This is a Pandaw group tour.

DAY 1 HANOI - HUE

Disembark and fly from Hanoi to Hue. On arrival at Hue airport, meet your local guide and transfer to on a bed and breakfast basis. The rest of the day is free to enjoy the hotel and relax. **Meals:** none

DAY 2 HUE

This morning we take a boat trip on the serene Perfume River to the best-known pagoda in Middle Vietnam, Thien Mu. Then we visit to the impressive tomb of former Emperor Tu Duc and a beautiful garden once belonging to the royalty followed by a royal style lunch at a local restaurant (included). In the afternoon, visit Hue citadel including Noon Gate, Thai Hoa Palace, Royal Urns and the ruins of the Forbidden Purple City. **Meals:** Breakfast at the Hotel, Lunch at local restaurant.

DAY 3 HUE - HOI AN

After breakfast we leave Hue for Hoi An. En route we'll travel through the Ocean Clouds Pass, visit Non Nuoc Beach and the fascinating Cham Museum. We continue to your hotel in Hoi An. In the afternoon, you will have time to explore this charming and wonderfully preserved merchant town that retains Chinese, Japanese, Vietnamese and European influences from its flourishing old days. **Meals:** Breakfast at hotel.

DAY 4 HOI AN

Day at leisure. Explore the beautiful old town of Hoi An or relax at the beach. **Meals:** Breakfast at hotel.

DAY 5 HOI AN - DANANG

Transfer to Danang Airport for your onward flight. It is possible to extend your stay in Hoian – please email information@pandaw.com for availability and prices. **Meals:** Breakfast at hotel.

CONT'D

PRE & POST EXTENSIONS

Pre & Post Bookable via Pandaw.com as add on

Pilgrimage Village Boutique Resort & Spa

Pilgrimage Village is ideally located in the quiet countryside in rustic village setting surrounding by lush tranquil gardens, yet near to famous historical landmarks. The resort embodies the subtle connection of traditional stylish and modern art concept.

Facilities

The air-conditioned deluxe rooms have king size double or twin beds, two private balconies, satellite television, safe, telephone, mini bar, writing desk, hair-dryer, alarm clock, in-room coffee, tea set & electronic water pot, slippers, bathtub, bathrobes, daily flowers & fruits, room service, turn-down service and free wifi.

130 Minh Mang road, Hue, Vietnam

Tel: +84 54 3 885 461

[Visit hotel website](#)



Victoria Hoi An Beach Resort & Spa

Victoria Hoi An Beach Resort & Spa replicates a traditional fishing village with small streets, water ponds and village houses with clay tiled roofs. The resort offers comfortable rooms incorporating unique design features inspired by traditional Vietnamese, Japanese and French colonial elements. Combining the elegance of local handicraft with the comfort of an international hotel.

Cua Dai Beach, Hoi An Town, Quang Nam

Tel: 0235 3927 040

[Visit hotel website](#)



Rates include

English speaking guide on tours, 1x lunch at local restaurant, economy one-way domestic air ticket Hanoi to Hue, 2 nights at Pilgrimage Village Hue (Deluxe Room) and 2 nights at Victoria Hoi An (Deluxe Garden Room), transportation by AC vehicle, daily breakfast, and entrance fees.

Rates exclude

International flights, visa, travel insurance, not mentioned beverages and meal.

Extension Code: LTM-Hue-HoiAnPostVic

OPTIONAL PACKAGE ADDONS & OTHER INFORMATION

Optional cruise add ons

PRE-BOOKABLE HOUSE WINE PACKAGE [Read more](#)

FREE FLOW DRINKS [Read more](#)

FREE FLOW DRINKS & WINE PACKAGE [Read more](#)

River Conditions Warning!

The rivers you will sail on are subject to seasonal rises and falls of water level, in some places as much as 30 metres. Water levels can change dramatically overnight and a sudden rise can impede our progress upstream considerably and even prevent us from passing under certain bridges. A sudden fall can result in our being unable to get into certain places or go as far upstream as we would hope. Groundings on sandbars are not infrequent and are part of the excitement of any Pandaw expedition. Published itineraries are indicational only and subject to sudden change. In such events alternative itineraries will be provided and we do our best to ensure that if a stop is missed we make up for it with another stop. Passengers are thus forewarned and expected to be flexible and patient. River cruising in Asia can be a dramatic and adventurous experience - not like cruising the controlled waterways of Europe or America. Note also that we operate in areas with little or no developed infrastructure and subject to the strictures of local officialdom. Be prepared for this and it is all more the fun!

Useful Links

BOOKING TERMS & CONDITIONS [Read more](#)

GENERAL INFORMATION & LIFE ON BOARD [Read more](#)

VISA INFORMATION [Read more](#)

FOLLOW US ON SOCIAL MEDIA



facebook.com/pandawriverexpeditions



@pandaw_river_expeditions



@pandaw-river-expeditions



Pandaw Expeditions



PANDAW

GLOBAL

+84 (0)28 4458 2618

information@pandaw.com

UK

+44 (0)208 396 7320

uk@pandaw.com

AUSTRALIA

+61 (0)7 3184 2904

information@pandaw.com

PANDAW · COM